

MA5 UGELLI A CONO VUOTO HOLLOW CONE NOZZLES BOQUILLAS DE CONO HUECO

Caratteristiche

Gli ugelli della serie MA5 generano un spruzzo a cono vuoto senza presentare all'interno vorticatori il che li rendono adatti per applicazioni con liquidi non perfettamente filtrati. Producono una goccia di dimensioni ridotta con angoli di spruzzo molto ampi, 120°-150°-180°.

Applicazioni

- Protezione attiva contro gli incendi.

Materiali

Ottone, Aisi303, Aisi316, altri materiali a richiesta.

Characteristics

The MA5 series nozzles generate an empty cone spray without vorticators inside, which makes them suitable for applications with liquids that are not perfectly filtered. They produce a small drop with an extremely ample spray angle: 120°, 150°, and 180°.

Applications

- Active fire protection.

Materials

Brass, Aisi303, Aisi316, other materials on request.

Características

Las boquillas de la serie MA5 producen un chorro de cono hueco sin vórtices en su interior, lo que las hace adecuadas para aplicaciones con líquidos que no están perfectamente filtrados. Producen gotas de dimensiones pequeñas pero con ángulos de pulverización muy amplios: 120°, 150° y 180°.

Aplicaciones

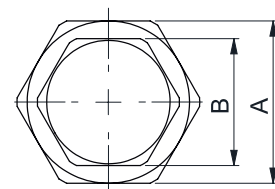
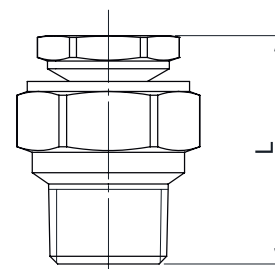
- Protección activa contra los incendios.

Materiales

Latón, Aisi303, Aisi316, otros materiales a petición.



MA5



Dimensions (mm)

| Connection | D(EX) | B | L |
|------------|-------|------|------|
| 1/8" | 12,7 | 11,1 | 29,0 |
| 1/4" | 15,9 | 14,2 | 33,0 |
| 3/8" | 22,2 | 20,6 | 45,2 |

| Flow Factor | Connections | | | US (gpm at 40 psi) | Pressure (Bar) | | | | | | Angle [°] 3 Bar |
|-------------|-------------|------|------|--------------------|----------------|------|-------------|------|------|------|-----------------------------|
| | | | | | 0,7 | 1,5 | 3 | 4 | 6 | 7 | |
| | 1/8" | 1/4" | 3/8" | | Capacity (Lpm) | | | | | | |
| 3 - 7 | • | | | 0,77 | 1,4 | 2,1 | 3,0 | 3,4 | 4,2 | 4,5 | 120 - 150 - 180 |
| 5 | • | | | 1,02 | 1,9 | 2,8 | 4,0 | 4,6 | 5,6 | 6,0 | 120 - 150 - 180 |
| 7 - 5 | • | | | 1,51 | 2,9 | 4,2 | 5,9 | 6,8 | 8,4 | 9,0 | 120 - 150 - 180 |
| 10 | | • | | 2,02 | 3,8 | 5,6 | 7,9 | 9,1 | 11,2 | 12,1 | 120 - 150 - 180 |
| 15 | | • | | 3,01 | 5,7 | 8,3 | 11,8 | 13,7 | 16,8 | 18,1 | 120 - 150 - 180 |
| 20 | | • | | 4,03 | 7,7 | 11,2 | 15,8 | 18,2 | 22,0 | 24,0 | 120 - 150 - 180 |
| 25 | | • | | 5,03 | 9,5 | 13,9 | 19,7 | 23,0 | 28,0 | 30,0 | 120 - 150 - 180 |
| 30 | | | • | 6,13 | 11,6 | 17,0 | 24,0 | 27,0 | 34,0 | 36,0 | 120 - 150 - 180 |
| 35 | | | • | 7,15 | 13,7 | 20,0 | 28,0 | 32,0 | 39,0 | 42,0 | 120 - 150 - 180 |
| 45 | | | • | 8,17 | 15,7 | 23,0 | 32,0 | 36,0 | 45,0 | 48,0 | 120 - 150 - 180 |
| 50 | | | • | 9,19 | 17,1 | 25,0 | 36,0 | 41,0 | 50,0 | 54,0 | 120 - 150 - 180 |
| 55 | | | • | 9,95 | 19,1 | 28,0 | 39,0 | 46,0 | 56,0 | 60,0 | 120 - 150 - 180 |