

## MA7 UGELLI A CONO VUOTO HOLLOW CONE NOZZLES BOQUILLAS DE CONO HUECO

### Caratteristiche

Gli ugelli della serie MA7 generano un spruzzo a cono vuoto senza presentare all'interno vorticatori il che li rendono adatti per applicazioni con liquidi non perfettamente filtrati. Producono una goccia di dimensioni ridotta.

### Applicazioni

- Protezione attiva contro gli incendi.

### Materiali

Ottone, Aisi303, Aisi316, altri materiali a richiesta.

### Characteristics

The MA7 series nozzles generate an empty cone spray without vorticators inside, making them suitable for applications with liquids that are not perfectly filtered. They produce a small drop size.

### Applications

- Active fire protection.

### Materials

Brass, Aisi303, Aisi316, other materials on request.

### Características

Las boquillas de la serie MA7 generan un chorro en forma de cono hueco sin vórtices en su interior, lo que las hace adecuadas para aplicaciones con líquidos que no están perfectamente filtrados. Producen gotas de dimensiones reducidas.

### Aplicaciones

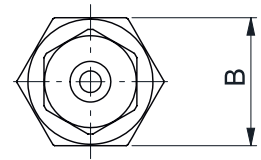
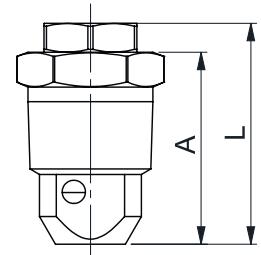
- Protección activa contra los incendios.

### Materiales

Latón, Aisi303, Aisi316, otros materiales a petición.



MA7



Dimensions (mm)

Connection	A	B	L
3/8"	27,5	17,0	31,2
1/2"	32,5	22,0	37,5
3/4"	38,1	27,0	44,5
1-1/2"	60,5	50,8	68,5

Flow Factor	Connections				Dia. (mm)	Min.Dia. (mm)	US (gpm at 40 psi)	Pressure (Bar)						Angle <math>\leq 3</math> Bar
	3/8"	1/2"	3/4"	1-1/2"				1	2	3	4	6	7	
								Capacity (Lpm)						
2	•				2,0	2,4	0,41	0,9	1,3	1,6	1,8	2,2	2,4	65
3	•				2,4	2,4	0,61	1,4	1,9	2,4	2,7	3,4	3,6	65
5	•	•	•		3,2	2,8	1,00	2,3	3,2	3,9	4,6	5,6	6,0	70
8	•	•	•		4,0	4,0	1,61	3,6	5,2	6,3	7,3	8,9	9,6	65
10	•	•	•		4,4	4,0	2,02	4,6	6,4	7,9	9,1	11,2	12,1	65
20-10	•				4,4	4,0	2,83	6,4	9,0	11,1	12,8	15,6	16,9	65
15		•	•		5,2	4,4	3,01	6,8	9,7	11,8	13,7	16,8	18,1	65
20		•	•		6,0	4,8	4,03	9,1	12,9	15,8	18,2	22,0	24,0	65
25		•	•		7,1	5,2	5,03	11,4	16,1	19,7	23,0	28,0	31,0	70
40				•	7,9	9,5	8,17	18,2	26,0	32,0	36,0	45,0	48,0	75
50			•	•	9,5	7,1	9,96	23,0	32,0	39,0	46,0	56,0	61,0	75
60				•	11,1	9,5	12,00	27,0	39,0	47,0	55,0	67,0	72,0	75
70				•	12,7	9,5	14,04	32,0	45,0	55,0	64,0	78,0	84,0	75
80				•	14,3	9,5	16,09	36,0	52,0	63,0	73,0	89,0	96,0	75
90				•	14,7	9,5	18,13	41,0	58,0	71,0	82,0	101,0	109,0	80
100				•	15,9	9,5	20,17	46,0	64,0	79,0	91,0	112,0	121,0	85
110				•	17,1	9,5	22,22	50,0	71,0	87,0	100,0	123,0	133,0	85
120				•	18,3	9,5	24,26	55,0	77,0	95,0	109,0	134,0	145,0	85