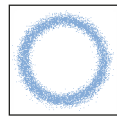


**HYDRAULIC ATOMIZERS**

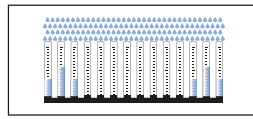
RX/RZ series hydraulic nozzles deliver a very finely atomized hollow cone spray, even at low pressure values. They contain a precisely machined insert with narrow passages that can be easily disassembled for cleaning in case of obstruction. Clogging can be avoided placing a fine mesh strainer on the main manifold or using an individual filter.

RW hydraulic atomizers works in the same way, but the tip is locked with a welded nipple ZAA and a locknut VAA. The capacities of RW tip are the same of RX nozzle. To have the complete product code, just change “RX” with “RW”.

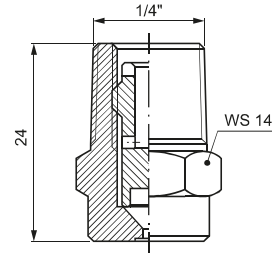
- **Connection:**  
BSPT (RX), BSP (RZ), NPT (RX, RZ), tip with nipple and locknut (RW)
- **Typical applications**  
dust control, humidification, deodorant spray, disinfectant liquid spray, exhaust scrubbers



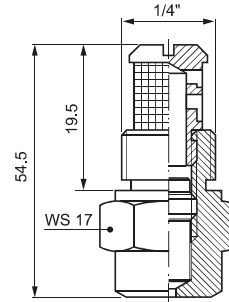
Spray section



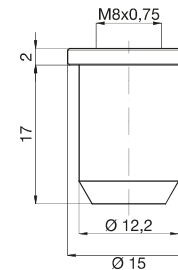
Concave distribution



RX



RZ (+VEF)



RW

HOLLOW CONE NOZZLES

Code	D mm	Capacity (l/hour) at different pressure values (bar)																				
		1.5	2.0	3.0	4.0	5.0	6.0	10	15	20	50											
80°																						
RXT 0060 xx	0.50	2.55	2.94	3.60	4.16	4.65	5.09	6.57	8.05	9.30	14.7											
RXT 0100 xx	0.50	4.24	4.90	6.00	6.93	7.75	8.49	11.0	13.4	15.5	24.5											
RXT 0130 xx	0.70	5.52	6.37	7.80	9.01	10.1	11.0	14.2	17.4	20.1	31.8											
RXT 0190 xx	0.70	8.06	9.31	11.4	13.2	14.7	16.1	20.8	25.5	29.4	46.5											
RXT 0250 xx	1.00	10.6	12.2	15.0	17.3	19.4	21.2	27.4	33.5	38.7	61.2											
RXT 0380 xx	1.00	16.1	18.6	22.8	26.3	29.4	32.2	41.6	51.0	58.9	93.1											
RXT 0510 xx	1.50	21.6	25.0	30.6	35.3	39.5	43.3	55.9	68.4	79.0	125											
RXT 0650 xx	1.60	27.6	31.8	39.0	45.0	50.3	55.2	71.2	87.2	101	159											
RXT 0780 xx	1.90	33.1	38.2	46.8	54.0	60.4	66.2	85.4	105	121	191											
RXT 0910 xx	1.90	38.6	44.6	54.6	63.0	70.5	77.2	99.7	122	141	223											
RXT 1116 xx	1.90	49.2	56.8	69.6	80.4	89.9	98.4	127	156	180	284											
RXT 1143 xx	1.90	60.7	70.1	85.8	99.1	111	121	157	192	222	350											
RXT 1166 xx	2.20	70.4	81.3	99.6	115	129	141	182	223	257	407											

Code	D mm	Capacity (l/min) at different pressure values (bar)																				
		1.5	2.0	3.0	4.0	5.0	6.0	10	15	20	50											
60°																						
RZQ 0080 xx	0.45	0.06	0.07	0.08	0.09	0.10	0.11	0.15	0.18	0.21	0.33											
RZQ 0120 xx	0.55	0.08	0.10	0.12	0.14	0.15	0.17	0.22	0.27	0.31	0.49											
RZQ 0250 xx	0.80	0.18	0.20	0.25	0.29	0.32	0.35	0.46	0.56	0.65	1.02											
RZQ 0390 xx	1.00	0.28	0.32	0.39	0.45	0.50	0.55	0.71	0.87	1.01	1.59											
RZQ 0560 xx	1.20	0.40	0.46	0.56	0.65	0.72	0.79	1.02	1.25	1.45	2.29											
RZQ 0780 xx	1.40	0.55	0.64	0.78	0.90	1.01	1.10	1.42	1.74	2.01	3.18											
RZQ 1100 xx	1.60	0.71	0.82	1.00	1.15	1.29	1.41	1.83	2.24	2.58	4.08											
RZQ 1140 xx	1.90	0.99	1.14	1.40	1.62	1.81	1.98	2.56	3.13	3.61	5.72											
RZQ 1170 xx	2.10	1.20	1.39	1.70	1.96	2.19	2.40	3.10	3.80	4.39	6.94											
RZQ 1200 xx	2.30	1.41	1.63	2.00	2.31	2.58	2.83	3.65	4.47	5.16	8.16											

**VEF THREADED FILTERS**  
We suggest to use a VEF threaded filter to protect the nozzle against clogging.

**ADDITIONAL SPRAY ANGLES**  
The spray angle of the RZQ nozzles is 60° with orifice dimensions larger than 1.0 mm. Please see additional angles in the table below.

RZF	RZM	RZQ	RZU
30°	45°	60°	90°

**HOW TO MAKE UP THE NOZZLE CODE**

EX.: RXT 0060 B1

