

# SANIBOXER 100

MADE IN ITALY



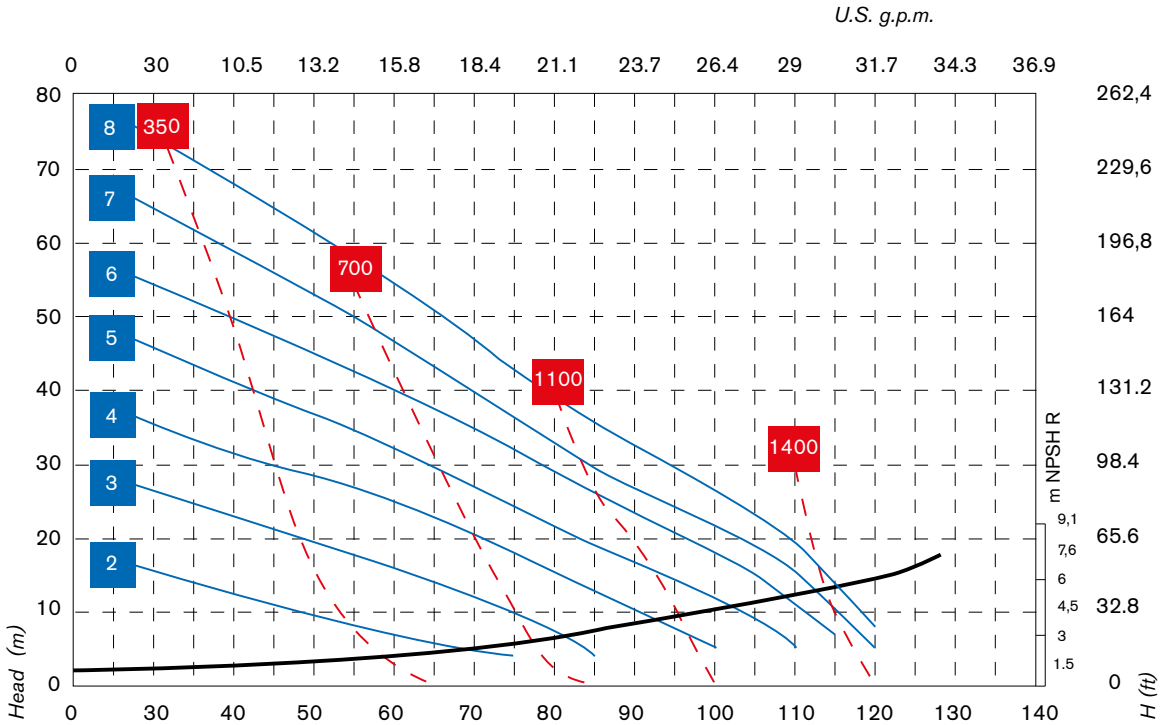
- **Product of Italian origin**
- **Patented** stall protection pneumatic circuit
- Works with **non**-lubricated air
- **Self priming**
- Possibility of adjusting the pumping speed
- Versatility of use
- Idles without damage
- **Certificate 3A**
- Built with mechanically polished AISI 316 L
- Suitable for pumping high viscosity fluids
- Suitable for food and pharmaceutical industry
- High performance
- High power and sturdiness
- Continuous operation: YES
- Warranty: 1 year - according to our general conditions of sale
- Spare parts: to identify the spare parts check the exploded views provided at the end of the operation and maintenance manual



**Intake/delivery connections** CLAMP 1" 1/2 - flow rate 120 l/min  
**Construction materials** AISI 316 L mechanically polished



# SANIBOXER 100



■ Air supply pressure (bar)     
 ■ Air consumption NI/min     
 Flow rate (litres/min)

\* The curves and performance values refer to pumps with submerged suction and a free delivery outlet with water at 20°C, and vary according to the construction material. \*\* Attention: the average values of the various configurations of materials by ball and ball seats. \*\*\* The value depends on the configuration of the pump.

<b>Intake/delivery connections</b>	CLAMP 1" 1/2
<b>Air connection</b>	3/8"
<b>Max. flow rate*</b>	120 l/min
<b>Max. air supply pressure</b>	8 bar
<b>Max. head*</b>	80 m
<b>Max. self-priming capacity**</b>	4 m
<b>Max. stored neg. suction</b>	9,5
<b>Max. diameter of passing solids</b>	4 mm
<b>Noise***</b>	75 dB
<b>Displacement per cycle</b>	222 cc
<b>Max. viscosity</b>	30.000 cps

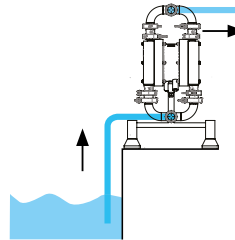
<b>Construction materials and net weight</b>	AISI 316 L    26 Kg    Temp. 3°C min.    95°C max.
--	--

## AVAILABLE MATERIAL

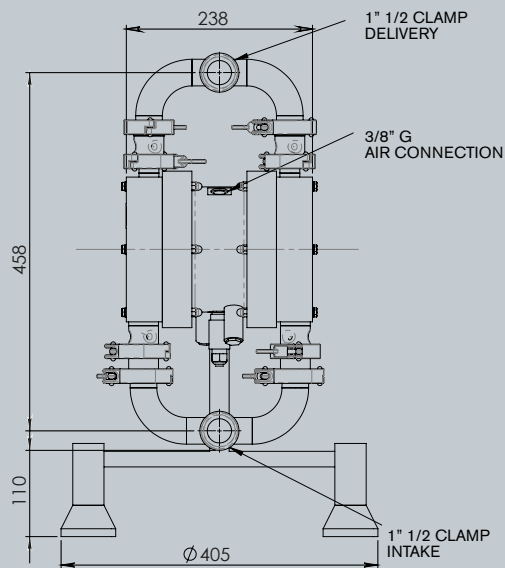
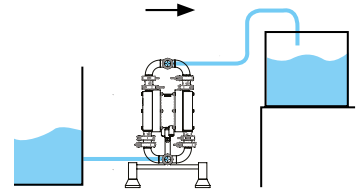


## INSTALLATION

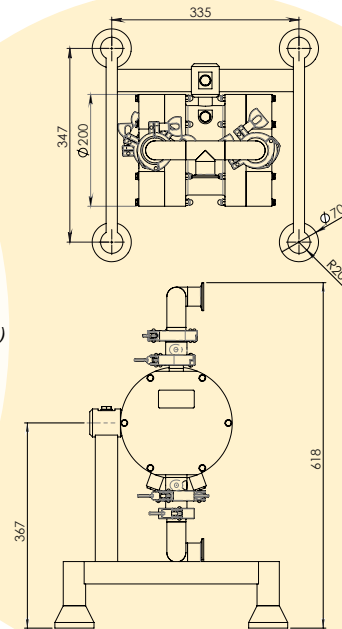
### SELF PRIMING



### POSITIVE SUCTION HEAD



(Dimensions in mm)



**Packing:** wooden case - 48 x 50 x 87 cm-weight 19 Kg  
(the weight only refers to the packaging without the pump in it).

## SANIBOXER COMPOSITION CODE

ex. **SB100A-DTTAT-**

Saniboxer 100 in AISI 316 L, diaphragm EPDM + PTFE, balls AISI 316 + ball seats AISI 316, O-Ring PTFE

<b>SB100</b>	<b>A -</b>	<b>D</b>	<b>T</b>	<b>T</b>	<b>A</b>	<b>T</b>	<b>-</b>
PUMP MODEL	PUMP BODY	SINGLE DIAPHRAGM		BALLS	BALL SEATS	O-RING*	
<b>SB100</b> - Saniboxer 100	<b>A</b> - AISI 316 L electropolished	AIR SIDE <b>D</b> - EPDM	FLUID SIDE <b>T</b> - PTFE	<b>T</b> - PTFE <b>A</b> - AISI 316	<b>A</b> - AISI 316 L	<b>T</b> - PTFE	