

LSMOD1

Caratteristiche

Tali teste sono costituite da una piccola sfera di lavaggio di forma toroidale: essa può essere inserita in un'apertura di soli 25 mm di diametro. L'attacco è 1/4" gas maschio. L'ingombro è minimo: lunghezza totale 50 mm, diametro massimo 25 mm, peso 40 grammi.

Applicazioni

- Lavaggio serbatoi

Materiali

- Corpo: Aisi316L
- Rotore: Aisi316L o PTFE o PEEK

Characteristics

Such heads are made by a small toroidal head: it can pass through an opening of only 25 mm of diameter. The connection is 1/4" gas male. Reduced overall dimension: total length is 50 mm, weight 40 grams, diameter 25 mm.

Application:

- Tank washing

Materials:

- Body: Aisi316L
- Rotor: Aisi316L o PTFE o PEEK

Características

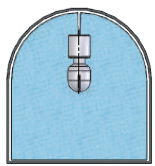
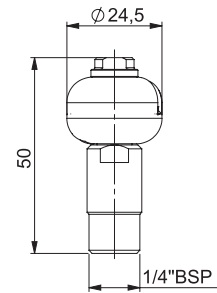
Dichas boquillas se hacen con un pequeño cabezal toroidal: puede pasar a través de una abertura de tan sólo 25 mm de diámetro. La conexión es de 1/4 gas macho. Las dimensiones reducidas totales son de 50 mm de largo, 40 gramos de peso y 25 mm de diámetro.

Aplicación:

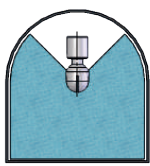
- Lavado de tanques

Materiales:

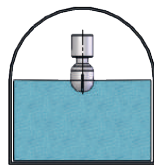
- Cuerpo: Aisi316L
- Rotor: Aisi316L o PTFE o PEEK



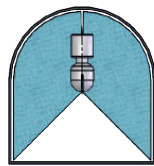
360°



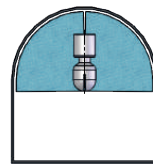
270° DOWN



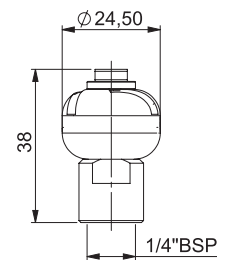
180° DOWN



270° UP



180° UP



CODE	Capacity (lpm) at different pressure (bar)							CONNECTION	COVERAGE	MAX. WET RADIUS (MT.)
	1	2	3	4	5	6	8			
LSMOD1F2.0	6,0	8,5	10,4	12,0	13,4	14,7	17,0	1/4" F	270° DOWN	1,0
LSMOD1F1.9	6,5	9,1	11,2	12,9	14,5	15,8	18,3	1/4" F	270° DOWN	1,0
LSMOD2.1U	8,0	11,4	14,0	16,2	18,0	19,8	22,9	3/8" F	360°	1,0
LSMOD1.2	11,5	16,3	20,0	23,1	25,8	28,3	32,7	1/4" M	360°	1,0
LSMOD1.3	11,5	16,3	20,0	23,1	25,8	28,3	32,7	1/4" M	180° UP	1,0
LSMOD1.4	11,5	16,3	20,0	23,1	25,8	28,3	32,7	1/4" M	180° DOWN	1,0
LSMOD1.7	11,5	16,3	20,0	23,1	25,8	28,3	32,7	1/4" M	130° UP	1,0
LSMOD1.8	11,5	16,3	20,0	23,1	25,8	28,3	32,7	1/4" M	90° DOWN	1,0
LSMOD1.1	13,3	18,8	23,0	26,6	29,7	32,5	37,6	1/4" M	360°	1,0
LSMOD1.5	16,5	23,4	28,6	33,0	36,9	40,4	46,7	1/4" M	360°	1,2
LSMOD1.6	16,5	23,4	28,6	33,0	36,9	40,4	46,7	3/8" F	360°	1,2

M6LSD

MICRO

Caratteristiche

Le teste di lavaggio M6LSD sono state sviluppate per il lavaggio di file, boccetti e piccoli vani con apertura di 10 mm. La testa rotante è costruita interamente in acciaio inossidabile AISI 316 oppure con lo stelo in AISI 316 e la parte rotante in PEEK. La finitura liscia e di ottima qualità garantisce una rotazione perfetta anche senza cuscinetti a sfere. La testa è disponibile attacco filettato maschio M6.

Applicazioni

- Lavaggio fiale, piccoli contenitori

Materiali

- Corpo: Aisi316L
- Rotore: Aisi316L o PEEK

Characteristics

The rotating heads M6LSD have been developed for washing vials, small bottles and small compartments with 10 mm opening. The rotating head is made entirely of stainless steel AISI 316 or with the stem in AISI 316 and the rotating part in PEEK. The smooth and high quality finish guarantees perfect rotation even without ball bearings. The head is available M6 male threaded connection.

Application:

- Wash vials, small containers

Materials:

- Body: Aisi316L
- Rotor: Aisi316L o PEEK

Características

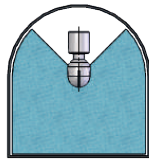
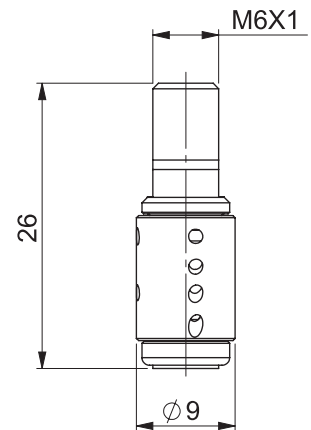
Las boquillas del limpieza M6LSD han sido desarrolladas para lavar filamentos, botellas pequeñas y pequeños compartimentos con 10 mm de apertura. La boquilla rotativa está hecha completamente de acero inoxidable AISI 316 o con el vástago en AISI 316 y la parte giratoria en PEEK. El acabado liso y de alta calidad garantiza una rotación perfecta incluso sin rodamientos de bolas. Las boquilla está disponible con conexión roscada macho M6.

Aplicación:

- Lavado de viales, contenedores pequeños

Materiales:

- Cuerpo: Aisi316L
- Rotor: Aisi316L o PEEK



270° DOWN

Mod.	MATERIAL		Capacity (lpm) at different pressure (bar)					CONNECTION	COVERAGE	MAX. WET RADIUS (MT.)
	BODY	ROTOR	1	2	3	4	5			
AM6LSD9L4	AISI316L	AISI316L	2,6	3,6	4,5	5,2	5,8	M6	270°	0,1
APKM6LSD9L4	AISI316L	PEEK	2,6	3,6	4,5	5,2	5,8	M6	270°	0,1
AM6LSD9	AISI316L	AISI316L	4,0	5,6	6,9	8,0	9,8	M6	270°	0,4
APKM6LSD9	AISI316L	PEEK	4,0	5,6	6,9	8,0	9,8	M6	270°	0,4
AM6LSD9L8	AISI316L	AISI316L	5,6	8,0	9,8	11,3	12,7	M6	270°	0,6
APKM6LSD9L8	AISI316L	PEEK	5,6	8,0	9,8	11,3	12,7	M6	270°	0,6

LSN

Caratteristiche

Le teste rotanti LSN hanno il corpo in acciaio inossidabile AISI 316L e rotore in PEEK. La finitura liscia e di ottima qualità garantisce una rotazione perfetta anche senza cuscinetti a sfere. La connessione standard della testa è filettata femmina da 3/8", a richiesta altre connessioni.

Applicazioni

- Lavaggio serbatoi

Materiali

- Corpo: Aisi316L
- Rotore: PEEK

Characteristics

LSN rotary heads have AISI 316L stainless steel body and PEEK rotor.

The smooth and high quality finish guarantees perfect rotation even without ball bearings.

The standard connection of the head is 3/8" female threaded, on request other connections.

Application:

- Tank washing

Materials:

- Body: Aisi316L
- Rotor: PEEK

Características

Las boquillas rotativas LSN tienen cuerpo de acero inoxidable 316L y rotor PEEK.

El acabado liso y de alta calidad garantiza una rotación perfecta incluso sin rodamientos de bolas.

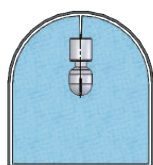
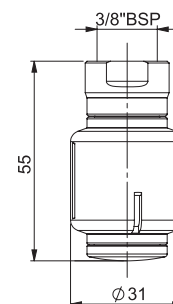
La conexión estándar del cabezal es rosca hembra de 3/8" bajo pedido otras conexiones.

Aplicación:

- Lavado de tanques

Materiales:

- Cuerpo: Aisi316L
- Rotor: PEEK



360°

Mod.	Capacity (lpm) at different pressure (bar)					CONNECTION	COVERAGE	MAX. WET RADIUS (MT.)
	1	2	3	4	5			
APK2FLSN14	8	11	14	16	18	3/8" BSP	360°	0,5
APK2FLSN18	10	15	18	21	23	3/8" BSP	360°	0,6
APK2FLSN40	23	33	40	46	52	3/8" BSP	360°	0,8
APK2FLSN50	29	41	50	58	65	3/8" BSP	360°	1

LSB

Caratteristiche

La teste rotanti LSB sono realizzate in acciaio inossidabile AISI 316L con bussole in teflon per ridurre la rumorosità e l'attrito. Tutte le superfici interne ed esterne sono lavorate con macchine utensili ad alta precisione garantendo una finitura liscia e un'ottima qualità del prodotto. La connessione standard è di 1/2" BSP femmina.

Applicazioni

- Lavaggio serbatoi

Materiali

- Aisi316L
- altri a richiesta

Characteristics

LSB rotary heads are made of AISI 316L stainless steel with teflon bushings to reduce noise and friction. All internal and external surfaces are machined with high precision machine tools ensuring a smooth finish and excellent product quality. The standard connection is 1/2" BSP female.

Application:

- Tank washing

Materials:

- Aisi316L
- other on request

Características

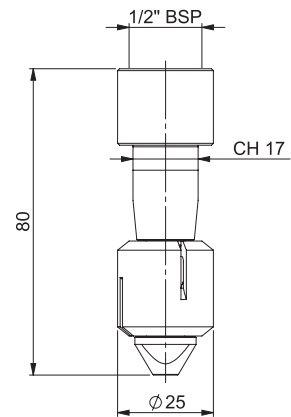
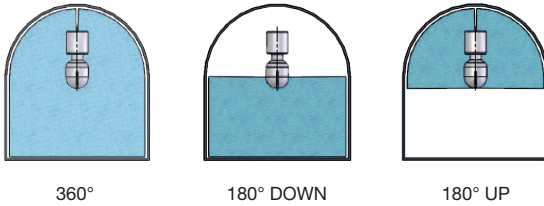
Las boquillas rotativas LSB están hechas de acero inoxidable AISI 316L con casquillos de teflón para reducir el ruido y la fricción. Todas las superficies internas y externas están mecanizadas con máquinas herramienta de alta precisión que garantizan un acabado uniforme y una excelente calidad del producto. La conexión estándar es de 1/2" BSP hembra.

Aplicación:

- Lavado de tanques

Materiales:

- Aisi316L
- otros bajo pedido



Mod.	Capacity (lpm) at different pressure (bar)					CONNECTION	COVERAGE	MAX. WET RADIUS (MT.)
	1	2	3	4	5			
A3LSB25T	14	20	25	29	32	1/2" BSP	360°	0,6
A3LSB25D	14	20	25	29	32	1/2" BSP	180° DOWN	0,6
A3LSB25U	14	20	25	29	32	1/2" BSP	180° UP	0,6