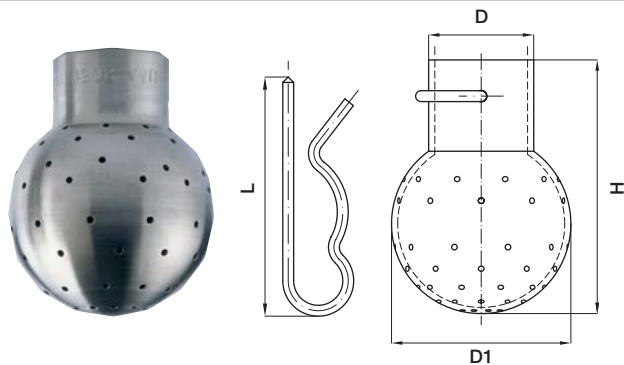


# TANK WASHING EQUIPMENT

## FIXED HEADS

## UAA



UAA fixed spray heads are a simple, fast and efficient device for cleaning the inside of small size tanks where a simple rinsing action is required.

Their simple design allows for the head to be easily cleaned after being operated, which makes it possible to leave the heads permanently in place ready for use.

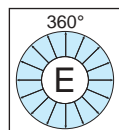
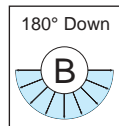
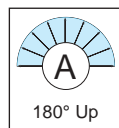
Because of the relatively high washing fluid flow rate, they are usually operated at low pressures and can achieve a limited impact action on the tank wall.

However, in those cases where fixed heads can achieve a satisfactory cleaning result, their simple design assures low investment cost and maximum reliability.

The figures for wetting radiuses shown at the right of the table have been obtained operating the heads with a water pressure value of 1 bar.

**Material** B31 Aisi 316L Stainless steel  
**Connection** Female BSP thread  
 Pipe clip

### Female BSP connection



Code	D inch	D1 mm	Capacity at different pressures				H mm	WR m
			1.0	1.5	2.0	2.5		
UAA C012 B31AG	1/4	28	1.20	1.46	1.69	1.89	34	1.6
UAA C014 B31BG		28	1.40	1.71	1.98	2.21	34	2.2
UAA C018 B31EG		28	1.80	2.20	2.54	2.84	34	1.0
UAA F030 B31AG	1/2	50	3.00	3.68	4.25	4.75	60	3.0
UAA F034 B31BG		50	3.10	3.80	4.38	4.90	60	3.2
UAA F054 B31EG		50	5.40	6.61	7.63	8.54	60	2.4
UAA G087 B31AG	3/4	65	8.70	10.6	12.3	13.7	78	2.2
UAA G092 B31BG		65	9.20	11.3	13.0	14.5	78	2.5
UAA G132 B31EG		65	13.2	16.1	18.6	20.8	78	1.3
UAA K127 B31AG	1 1/4	90	12.7	15.6	17.9	20.0	106	2.2
UAA K159 B31BG		90	15.9	19.5	22.5	25.1	106	3.4
UAA K298 B31EG		90	29.8	36.5	42.1	47.1	106	3.1

### PRODUCT CODE

The codes in the table beside refer to heads with different spray patterns, BSP female threads as shown in the table.

Please note the product code differences according to the spray patterns, as indicated in the diagrams beside.

(NPT thread types shown in our American Catalog CTG LS).

Please note the digit before the last one in the code shows the head spray pattern as indicated in the diagrams.

## TANK WASHING EQUIPMENT

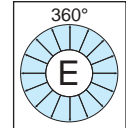
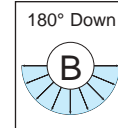
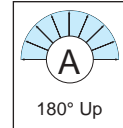
### Product Code

### FIXED HEADS

The codes in the table below refer to heads with different spray patterns and different clip connections. While the connection pipe of each head has the dimensions shown in the table, please note the product code differences according to the spray patterns, as indicated in the diagrams below. All our UAA heads have a flat upper side to assure cleaning action over the area around the inlet pipe.

Clip-on connection

Code	D mm	D1 mm	Capacity at different pressures				m <sup>3</sup> /h bar	H mm	WR m
			1.0	1.5	2.0	2.5			



UAA C012 B31AC	22.0 x 20.0	28	1.20	1.46	1.69	1.89	34	1.4
UAA E023 B31AC		40	2.30	2.82	3.25	3.64	62	5.5
UAA E030 B31AC		40	3.00	3.68	4.25	4.75	62	3.0
UAA F034 B31AC		50	3.40	4.16	4.81	5.38	74	3.0
UAA F047 B31AD	28.0 x 26.0	50	4.70	5.76	6.65	7.43	76	7.2
UAA G053 B31AD		65	5.30	6.49	7.50	8.38	92	2.5
UAA G093 B31AE	32.0 x 30.0	65	9.30	11.4	13.1	14.7	92	2.5
UAA K134 B31AH	38.0 x 36.0	90	13.4	16.4	18.9	21.2	118	2.4
UAA M102 B31AL	60.3 x 52.8	120	10.2	12.5	14.4	16.1	150	2.3

UAA C014 B31BC	22.0 x 20.0	28	1.40	1.71	1.98	2.21	34	1.2
UAA E023 B31BC		40	2.30	2.82	3.25	3.64	62	5.9
UAA E031 B31BC		40	3.10	3.80	4.38	4.90	62	3.1
UAA F032 B31BC		50	3.20	3.92	4.53	5.06	74	3.2
UAA F047 B31BD	28.0 x 26.0	50	4.70	5.76	6.65	7.43	76	7.2
UAA G055 B31BD		65	5.55	6.74	7.78	8.70	92	3.2
UAA G105 B31BE	32.0 x 30.0	65	10.5	12.9	14.9	16.6	92	3.2
UAA K159 B31BH	38.0 x 36.0	90	15.9	19.5	22.5	25.1	118	3.4
UAA M089 B31BL	60.3 x 52.8	120	8.90	10.9	12.6	14.1	150	1.7

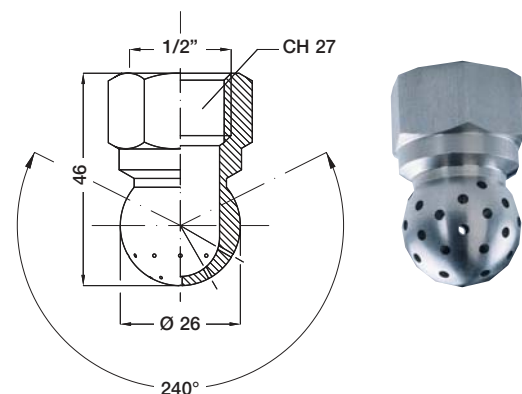
UAA C018 B31EC	22.0 x 20.0	28	1.80	2.20	2.54	2.84	34	1.8
UAA E038 B31EC		40	3.80	4.65	5.37	6.01	62	3.8
UAA E051 B31EC		40	5.10	6.25	7.21	8.06	62	2.4
UAA F055 B31EC		50	5.55	6.74	7.78	8.70	74	2.4
UAA F072 B31ED	28.0 x 26.0	50	7.20	8.82	10.2	11.4	76	4.3
UAA G086 B31ED		65	8.60	10.5	12.2	13.6	92	2.3
UAA G179 B31EE	32.0 x 30.0	65	17.9	21.9	25.3	28.3	92	2.3
UAA K242 B31EH	38.0 x 36.0	90	24.2	29.6	34.2	38.2	118	2.0
UAA M190 B31EL	60.3 x 52.8	120	19.0	23.3	26.8	30.0	150	2.0

### UAB

UAB heads are very compact devices, for applications like pipe washing or for cleaning tight spaces. The thick walls of this device, which is machined from solid stainless steel rod, make it also a good choice where the washing process needs to be performed at high pressure values.

Female BSP thread

Code	E mm	D mm	Capacity at different pressures				lpm bar
			2.0	3.0	4.0	5.0	
UAB 2220 xxSG	0.8	26	18.0	22.0	25.3	28.5	
UAB 2343 xxSG	1.0		28.0	34.3	39.5	44.3	
UAB 2700 xxSG	1.5		57.0	70.0	80.5	90.3	
UAB 3110 xxSG	2.0		90.0	110	126	142	
UAB 3145 xxSG	2.3		118	145	167	187	



Material B1 Aisi 303 Stainless steel  
B31 Aisi 316L Stainless steel

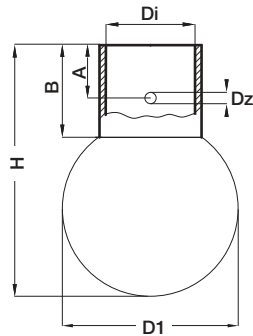
# TANK WASHING EQUIPMENT

## FIXED HEADS

UAC

UAC series spray balls are manufactured out of solid stainless steel bars and feature high wall thickness for maximum service life, excellent resistance to damages from impact and superior efficiency. In fact their wall thickness allows to obtain water outlet orifices with the ideal geometry to maximize the efficiency of the water jets, that is the ideal orifice length/orifice diameter ratio. This is of course not possible when the ball body is obtained from stamped steel sheet.

Material **B31** Aisi 316L Stainless steel  
**L8** Hastelloy C276



Dn	Di	Dz	A	B	H
15	18.2	2.2	9	18	42
20	22.2	2.5	9	21	53
25	28.3	2.8	18	35	90
32	34.2	2.8	18	35	90
40	43.3	2.8	18	35	90
50	52.3	3.3	25	48	122

### Clip-on connection

Code	Dn mm	D1 mm	Capacity at different pressures				WR m
			1.0	1.5	2.0	2.5	

### 180° Up

UAC D021 B31AC	15	32	2.10	2.60	3.00	3.30	0.5
UAC E056 B31AC	20	40	5.60	6.80	7.90	8.80	1.0
UAC G087 B31AC	25	65	8.70	10.6	12.3	13.7	1.0
UAC G096 B31AC	40	65	9.60	11.7	13.6	15.2	1.5
UAC G098 B31AC	32	65	9.80	12.0	13.8	15.5	1.5
UAC G142 B31AC	25	65	14.2	17.4	20.1	22.4	1.5
UAC G149 B31AC	40	65	14.9	18.2	21.0	23.5	1.8
UAC G160 B31AC	32	65	16.0	19.6	22.6	25.3	1.8
UAC K195 B31AC	50	90	19.5	23.9	27.5	30.8	2.0
UAC K310 B31AC	50	90	31.0	38.0	43.8	49.0	2.8
UAC K361 B31AC	50	90	36.0	44.0	50.9	56.8	3.8

### 270° Up

UAC E075B31CC	20	40	7.50	9.2	10.6	11.8	1.1
UAC G100 B31CC	25	65	10.0	12.2	14.1	15.8	1.5
UAC G104 B31CC	40	65	10.4	12.7	14.7	16.4	1.6
UAC G114 B31CC	32	65	11.4	13.9	16.1	18.0	1.5
UAC G160 B31CC	25	65	16.0	19.6	22.6	25.3	1.8
UAC G180 B31CC	40	65	18.0	22.0	25.4	28.4	1.8
UAC G200 B31CC	32	65	20.0	24.4	28.2	31.6	1.8
UAC K277 B31CC	50	90	27.7	33.9	39.1	43.8	2.0
UAC K450 B31CC	50	90	45.0	55.1	63.6	71.0	2.5

### 180° Down

UAC C025 B31BC	15	32	2.50	3.10	3.50	3.90	0.5
UAC D063 B31BC	20	40	6.30	7.70	8.90	9.80	1.0
UAC G070 B31BC	25	65	7.00	8.60	9.90	11.0	1.3
UAC G078 B31BC	32	65	7.80	9.50	11.0	12.3	1.3
UAC G109 B31BD	40	65	10.9	13.3	15.4	17.2	1.5
UAC G124 B31BD	25	65	12.4	15.1	17.5	19.6	1.6
UAC G137 B31BE	32	65	13.7	16.7	19.3	21.6	1.6
UAC G140 B31BD	40	65	14.0	17.1	19.8	22.1	1.6
UAC K170 B31BH	50	90	17.0	20.8	24.0	26.8	2.0
UAC K307 B31BL	50	90	30.7	37.6	43.4	48.5	2.5

### 360°

UAC D042 B31EC	15	32	4.20	5.10	5.95	6.60	0.5
UAC E077 B31EC	20	40	7.70	9.40	10.9	12.2	1.0
UAC G110 B31EC	25	65	11.0	13.5	15.6	17.4	1.0
UAC G118 B31EC	40	65	11.8	14.4	16.6	18.7	1.5
UAC G135 B31EC	32	65	13.5	16.5	19.0	21.3	1.5
UAC G175 B31EC	25	65	17.5	21.4	24.7	27.6	1.8
UAC G217 B31EC	32	65	21.7	26.5	30.7	34.3	1.5
UAC G228 B31EC	40	65	22.8	27.9	32.2	36.0	1.8
UAC K286 B31EC	50	90	28.6	35.0	40.4	45.2	2.0
UAC K491 B31EC	50	90	49.1	60.1	69.4	77.6	2.5

