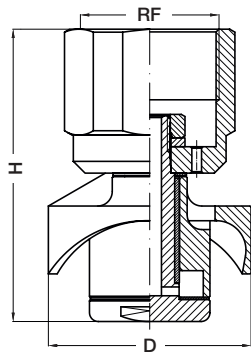


SINGLE AXIS HEADS

REACTION DRIVE

UBD



Materials

Body,

shaft and rotary head **B31** Aisi 316L Stainless steel
L61 Hastelloy C22

Bearings

E1 PTFE

UBD rotary heads can profit from the special design of their rotary head, which allows for a very even water distribution, assuring optimum surface coverage.

They assure therefore very short washing cycles, using lower quantities of water, with a definite advantage in those applications where recycled water is not allowed as a washing medium, and the volumes sent to disposal must be kept to a minimum.

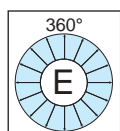
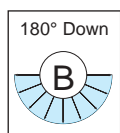
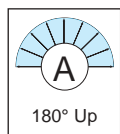
UBD heads work using Teflon slide bearings floating at high speed over a thin water film, the only wear part being an easily replaceable Teflon washer.

Only a fraction of the liquid energy is then used to power the washing head, while the high speed of the rotating disc produces instantly a cloud of high energy droplets all over the inside surface of the tank.

The clever design of this device results in no maintenance at all being necessary. Large inside passages are not easily subject to plugging while an extremely simple design with only one moving part avoids any internal jamming.

All inside and outside surface are carefully polished, for fast and easy sanitizing. The two following tables give data about types with threaded connection and clip-on types.

Thread connection



Code	Capacity at different pressures					lpm bar	Spray pattern deg			Thread connection inch				Dimensions mm	
	2.0	3.0	4.0	5.0	7.0		360	180U	180D	1/4	3/4	1	1/2	H	D
UBD 0035 B31EG	28.6	35.0	41.0	45.0	53.5	•			•					54	36
UBD 0051 B31EG	40.8	50.0	57.9	64.5	76.4	•				•				55	35
UBD 0051 B31AG	40.8	50.0	57.9	64.5	76.4		•			•					
UBD 0051 B31BG	40.8	50.0	57.9	64.5	76.4			•		•					
UBD 0090 B31EG	73.5	90.0	104	116	137	•					•			75	51
UBD 0090 B31AG	73.5	90.0	104	116	137		•				•				
UBD 0090 B31BG	73.5	90.0	104	116	137			•			•				
UBD 0141 B31EG	114	140	162	180	213	•						•		105	68
UBD 0141 B31AG	114	140	162	180	213		•					•			
UBD 0141 B31BG	114	140	162	180	213			•				•			
UBD D210 B31EG	177	210	240	259	275	•						•			

1/4" models have PTFE rotary head

Models with clip-on connection available on request. See clip dimensions for UBD models at page 26.

SINGLE AXIS HEADS

UBD/A

REACTION DRIVE

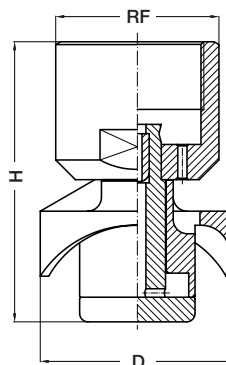
UBD-A rotary heads are a simple but very efficient device for the inside cleaning of tanks. The rotary disk is rotated through the action of the cleaning fluid and produces a very dense spray which reaches all parts of the inside surface, it is the only mobile part of the unit and requires no servicing at all.

No lubrication is required, and therefore no risk exists of contaminating your product with oil or grease.

The device is not easily clogged tanks to a minimum internal passage of 2 mm dia, and will continue to operate even when feed holes are partially closed. Ideally suited for aggressive environments, it operates efficiently with all detergents and chemical solutions, in both closed and open tanks because available with 360 or 180 degrees spray patterns.

UBD-A models find their application in pharmaceutical, chemical and food industries, where pure PTFE complies with the requirements of FDA CFR21.

Models made out of Carbon filled PTFE do not allow for the build up static electricity and can be employed in atmospheres where an explosion risk occurs.



LT 95° C

- Materials
- E1 PTFE, pure
 - E22 PTFE, 25% carbon filled
 - D9 PEEK

Thread connection

Code	Capacity at different pressures					Spray pattern deg			Thread connection inch				Dimensions mm		 180° Up
	2.0	3.0	4.0	5.0	6.0	360	180U	180D	1/4	3/4	1	1 1/2	H	D	
UBD A035 xxEG	28.6	50		45.2	53.5	•			•				50	30	 180° Down
UBD A090 xxEG	73.5	90.0	104	116	137	•				•			55	40	
UBD A090 xxAG	73.5	90.0	104	116	137		•			•			75	51	 360°
UBD A090 xxBG	73.5	90.0	104	116	137			•		•					
UBD A140 xxEG	114	140	162	180	213	•				•					
UBD A140 xxAG	114	140	162	180	213		•			•			100	70	
UBD A140 xxBG	114	140	162	180	213			•		•					
UBD A210 xxEG	171	210	243	271	320	•					•				
UBD A210 xxAG	171	210	243	271	320		•				•				
UBD A210 xxBG	171	210	243	271	320			•			•				