



Mobile device for an effective  
spatial disinfection

# DesintAir

- ▶ Economical operation
- ▶ Effective disinfection
- ▶ even in inaccessible areas



High efficiency against

**COVID 19**



# DesintAir

is a compact mobile device for fast, efficient and soft disinfection of enclosed spaces – vehicles, living areas, medical facilities, shops, offices and production facilities.



## DesintAir in action

**1** Place the **DesintAir** unit in the disinfected room

**2** Use the table to determine the disinfection time based on the room volume, the type of disinfection used and the number of **DesintAir** nozzles

**3** Set the disinfection start time (e.g. 1-minute delay) and disinfection time on the control unit



For easy operation, DesintAir is equipped with an automatic control unit with a clear LC display.



before disinfection



during disinfection

**4** We leave the room

**5** The machine will automatically start up and generate disinfectant dry mist for the necessary time

**6** Due to its physical properties, the dry mist fills up all the, even inaccessible, areas in the room

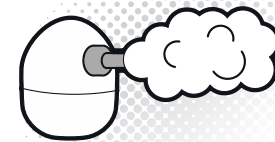
**7** After disinfection (exposure time), the process can be accelerated by venting the disinfected areas

**8** **The room is ready for normal use without restrictions**

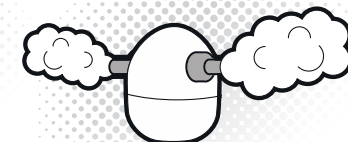
## Advantages

- ▶ **Extremely effective disinfection** – microscopic particles of dry mist are evenly distributed throughout the room and thus reliably disinfect even the most difficult places - corners, slits, gaps
- ▶ **Preventing human factor failure** – Preventing human factor failure – because its operation is fully automated, no partial disinfection occurs due to fatigue, inattention, or indifference of the worker
- ▶ **A reliable method to combat coronavirus COVID-19**
- ▶ **The electrical non-conductivity** of the dry mist allows the disinfection of live electrical appliances
- ▶ **Gentle on disinfected surfaces** – dry mist does not condense on surfaces, it does not react chemically with them, it does not stain or otherwise damages surfaces
- ▶ **Operator friendly** – during the disinfection process the operator is not exposed to the disinfection mist as in case of other types of equipment
- ▶ **Compact dimensions** due to the high disinfection performance that DesintAir provides
- ▶ **Versatility** – with a suitable type of disinfection, it reliably works against most viruses and bacteria
- ▶ **The speed of disinfection** is most apparent when treating large areas
- ▶ **Very low disinfection consumption** Compared to standard atomizers, low operating costs
- ▶ **Minimal operating requirements** – simple operation and automatic operation allows quick and easy operator training, which can control DesintAir disinfection units in more disinfected areas at the same time

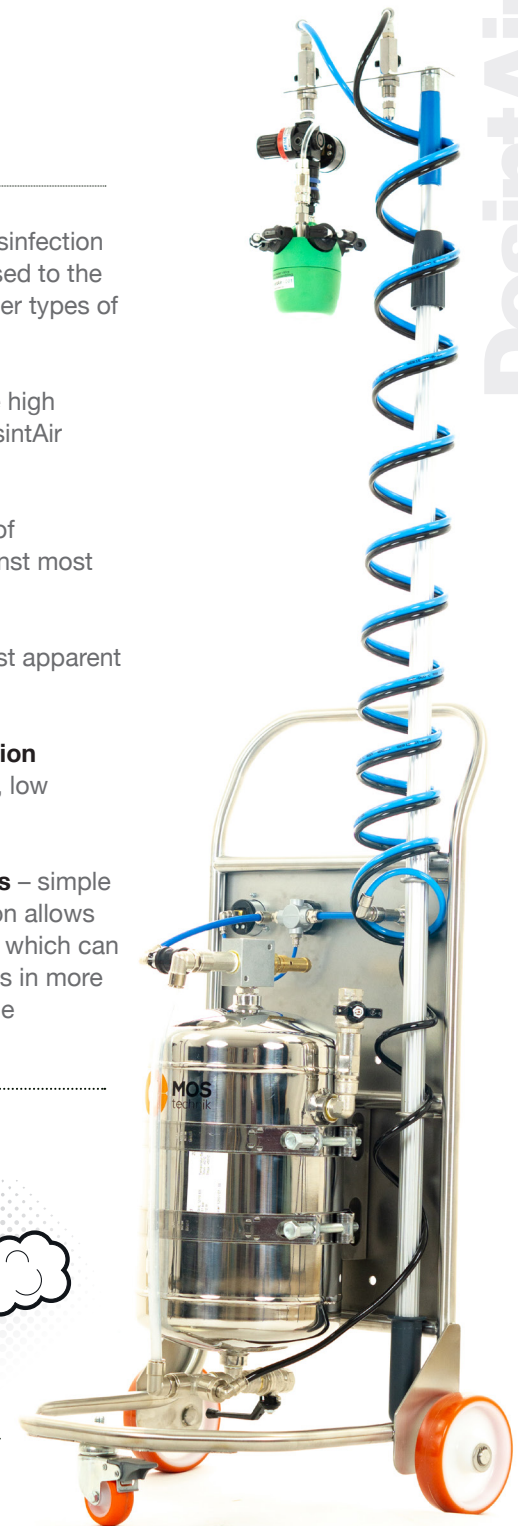
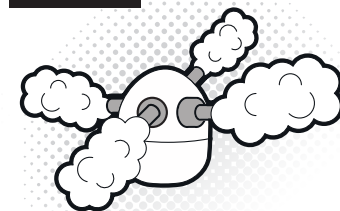
1 nozzle



2 nozzles



4 nozzles





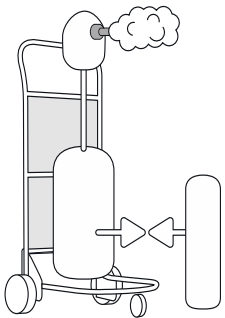
# DesintAir



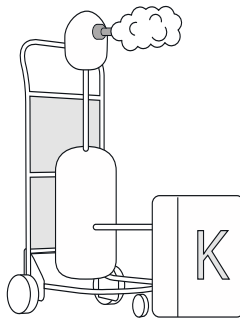
## Description

The core of the **DesintAir** mobile disinfection device is a head equipped with a set of special nozzles. Using compressed air, the nozzles create so-called dry mist - microscopic droplets of  $7.5 \mu\text{m}$  with specific properties. This dry mist can evenly fill the entire room in a short time, disinfecting even hard-to-reach areas.

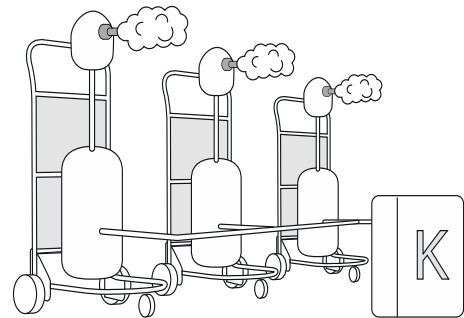
**DesintAir** is designed as a variable modular solution that allows operators to use different sources of compressed air or to choose from three performance options



Own distribution of compressed air



Compressor of different power



ompressor for more disinfection units