



**PRESSURE IS  
EVERYWHERE:  
WE CAN  
HANDLE IT!**

**FILTER REGULATORS  
STAINLESS STEEL  
AISI 316L**

# SPECIFICHE MAIN FEATURES

Filtri regolatori in acciaio inox AISI 316L adatti a tutti i settori industriali che richiedono un'ottima resistenza all'azione di agenti chimici e corrosivi. Una vasta gamma di range di regolazione garantisce inoltre un'eccellente precisione e stabilità della pressione impostata.

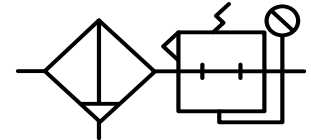
Tutte le versioni sono conformi alla direttiva 2014/68/UE PED. Disponibili a richiesta certificazioni:





Stainless steel AISI 316L filter regulator suitable for all industrial fields that require excellent resistance to the action of chemical and corrosive agents. A wide range of adjustment ranges also ensures excellent accuracy and stability of the set pressure.

All products comply with the directive 2014/68/UE (PED). Other certifications available on request:

ATEX 2014/34/UE:   II2GcIICTX  
II2DcIICTX

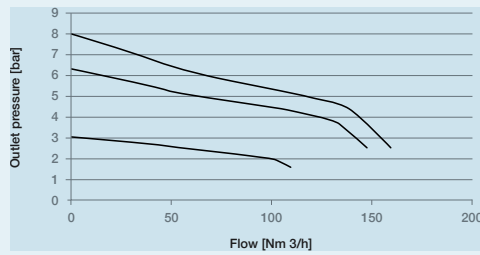
EAC-EX TP TC 012/2011:   RU C-IT.ГБ08.В.013...



| SERIE   | 14   | 12   | 10   | 20   |
|---|--|--|--|--|
|   | <b>FR314 ST</b>  | <b>312FR</b>   | <b>310FR</b>   | <b>FR320 M</b>   |
|   |                          |  |  |  |
| <b>ATTACCHI FILETTATI<br/>GAS O NPT</b><br>THREADED CONNECTIONS<br>GAS OR NPT | 1/4"-F   | 3/8"-F<br>1/2"-F   | 3/4"-F<br>1"-F<br>1" 1/4"-F<br>1" 1/2"-F   | 1" 1/2"-F<br>2"-F  |
| <b>ATTACCHI FLANGIATI<br/>FLANGED CONNECTIONS</b>                             | S.O. ANSI ... RF<br>EN1092 - 1 /01B ...<br>A richiesta / on request  |  |  |  |
| <b>KV</b>   | 1.4  | 2.9  | 8.4  | 24.9   |
| <b>PESO<br/>WEIGHT (KG)</b>   | 1.5  | 3  | 5.8  | 15.5   |
| <b>CONTROLLO PRESSIONE<br/>PRESSURE CONTROL</b>                               | MEMBRANA<br>Diaphragm  | MEMBRANA<br>Diaphragm  | PISTONE<br>Piston  | PISTONE<br>Piston  |
| <b>PRESSIONE DI ESERCIZIO<br/>MAX. INLET PRESSURE</b>                         | 30 o 50 BAR  |  |  |  |
| <b>RANGE PRESSIONE<br/>IN USCITA</b><br>OUTLET PRESSURE RANGE                 | 0,2-1,5 / 0,3-3 / 0,8-8 / 1,5-15<br>(Intervalli più alti a richiesta / Higher ranges available on request) |  |  |  |
| <b>TEMPERATURA ESERCIZIO<br/>WORKING TEMPERATURE</b>                          | -20°+60° C<br>(Temperature diverse disponibili a richiesta / Different temperatures available on request)  |  |  |  |
| <b>FUNZIONE RELIEVING<br/>RELIEVING FUNCTION</b>                              | SI<br>YES  |  |  |  |
| <b>CERTIFICAZIONI<br/>CERTIFICATIONS</b>                                      | PED / ATEX / FDA (O-RINGS) / EAC Ex  |  |  |  |
| <b>GRADO DI FILTRAZIONE<br/>FILTRATION RATE</b>                               | 5µm o 50µm   |  |  |  |
| <b>CAPACITÀ TAZZA<br/>BOWL CAPACITY</b>                                       | 140 cc   | 200 cc   | 500 cc   | 1000 cc  |
| <b>SCARICO CONDENSA<br/>CONDENSATE DRAIN</b>                                  | AUTOMATICO / Automatic (MAX 16BAR)<br>MANUALE / Manual (MAX 30BAR)<br>TAPPO / Cap (MAX 50BAR)              |  |  |  |
| <b>GUARNIZIONI<br/>STANDARD</b><br>STANDARD GASKETS                           | FPM (Altri disponibili a richiesta / Others available on request)  |  |  |  |

P.out 0.8-8

FR314 ST



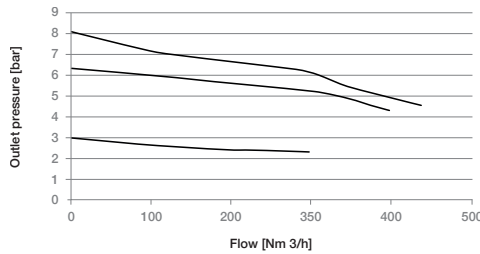
Inlet pressure: 10bar

Fluid: air

Flow rate:

- ~150Nm<sup>3</sup>/h, set 8bar, pressure drop 3,5bar;
- ~130Nm<sup>3</sup>/h, set 6,3bar, pressure drop 2,3bar;
- ~100Nm<sup>3</sup>/h, set 3bar, pressure drop 1bar.

312FR



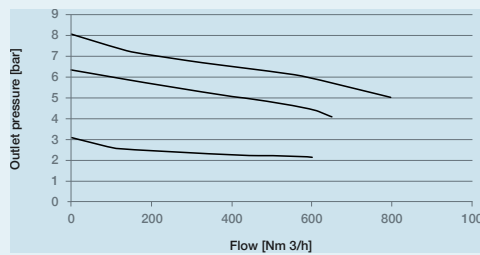
Inlet pressure: 10bar

Fluid: air

Flow rate:

- ~400Nm<sup>3</sup>/h, set 8bar, pressure drop 3bar;
- ~380Nm<sup>3</sup>/h, set 6,3bar, pressure drop 1,5bar;
- ~300Nm<sup>3</sup>/h, set 3bar, pressure drop 1bar.

310FR



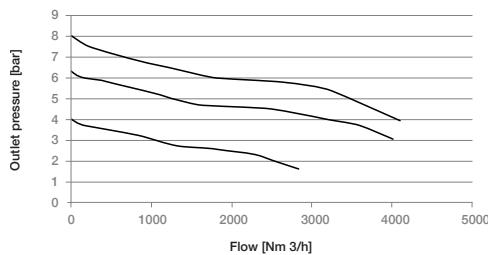
Inlet pressure: 10bar

Fluid: air

Flow rate:

- ~800Nm<sup>3</sup>/h, set 8bar, pressure drop 3bar;
- ~600Nm<sup>3</sup>/h, set 6,3bar, pressure drop 1,8bar;
- ~500Nm<sup>3</sup>/h, set 3bar, pressure drop 1bar.

FR320 M



Inlet pressure: 10bar

Fluid: air

Max flow rate:

- ~4000Nm<sup>3</sup>/h, set 8bar, pressure drop 3,5bar;
- ~3800Nm<sup>3</sup>/h, set 6,3bar, pressure drop 2,5bar;
- ~2500Nm<sup>3</sup>/h, set 3bar, pressure drop 2bar.



**ID Insert Deal Srl**

Strada dei Boschi, 40  
20852 Villasanta (MB) Italia

tel. +39 039 302035  
[www.idinsertdeal.com](http://www.idinsertdeal.com)