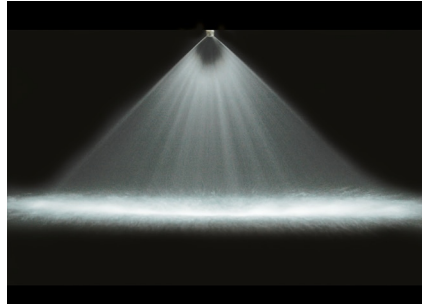


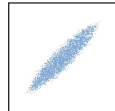
LOW FLOW FLAT FAN NOZZLES

These standard flat fan nozzles are available in a wide range of capacities, spray angles and materials. Nozzles shown on this page cover the low to minimal capacity range from 0.06 to 1.60 litres per minute. The tiny outlet orifices, machined with high precision, may require to be protected from clogging by means of an adequate filter positioned inside the supply line, depending upon the quantity and type of the solid particles suspended in the liquid. These nozzles can be made with a customized inner thread for a VEF filter (*optional). We suggest to buy these nozzles with their related VEF filter.

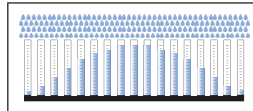


J nozzles series are also available with NPT thread: the code becomes H.

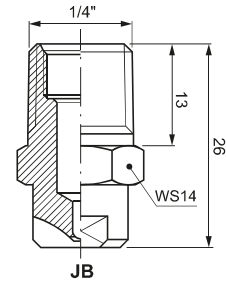
- **Thread specification:** BSPT, NPT
- **Typical applications**
 - Washing:** steel and PCB cleaning, glass substrate cleaning
 - Cooling:** steel cooling, product cooling
 - Other applications:** pre-treatment for coating process, sewage treatment system



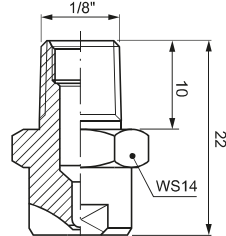
Spray section



Convex distribution



JB



JA

FLAT FAN NOZZLES

Nozzle	Spray angle								Capacity code	D mm	Capacity at different pressure values (l/min) (bar)							
	25°	40°	50°	65°	75°	80°	95°	110°			0.7	1.0	1.5	2.0	3.0	5.0	7.0	10
1/8"	JAD	JAL	JAN	JAR	JAS	JAT	JAV	JAJ										
1/4"	JBD	JBL	JBN	JBR	JBS	JBT	JBV	JBJ										
0100				•					0100	0.34	0.048	0.06	0.07	0.08	0.10	0.13	0.15	0.18
0130				•					0130	0.38	0.06	0.08	0.09	0.11	0.13	0.17	0.20	0.24
0150	•	•	•	•	•	•	•	•	0150	0.40	0.07	0.09	0.11	0.12	0.15	0.19	0.23	0.27
0200	•	•	•	•	•	•	•	•	0200	0.46	0.096	0.12	0.14	0.16	0.20	0.26	0.31	0.37
0260	•	•	•	•	•	•	•	•	0260	0.53	0.10	0.15	0.18	0.21	0.26	0.34	0.40	0.47
0390	•	•	•	•	•	•	•	•	0390	0.66	0.19	0.23	0.28	0.32	0.39	0.50	0.60	0.71
0590	•	•	•	•	•	•	•	•	0590	0.79	0.28	0.34	0.42	0.48	0.59	0.76	0.90	1.08

LIMIT OF MATERIALS PROCESSING

Hard materials such as stainless steel are extremely difficult to work with small profile drills, therefore not all nozzle sizes are available in all materials. Our sales office will offer you the best choice according to the materials and specifications you require.

Material	0100	0130	0150	0200	0260	0390	0590	0780
B31 - AISI 316L SS				•	•	•	•	•(1)
B1 - AISI 303 SS	•	•	•	•	•	•	•	•(2)
T1 - Brass	•	•	•	•	•	•	•	•(2)

- (1) Low capacity body
- (2) Standard capacity body

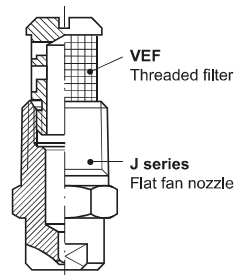
VEF THREADED FILTERS (OPTIONAL)

J series small capacity nozzles have a small diameter and can work with clean liquids. So, if you order small capacity nozzles, we suggest you to order VEF threaded filters too, to avoid clogging. Please see page 91 for more information.

Nozzle type	Thread filter code	Thread size
JA (1/8")	VEF 0411 xx	M7
JB (1/4")	VEF 0138 xx	3/8"UNF



VEF Threaded filter



HOW TO MAKE UP THE NOZZLE CODE

EX.: JAD 0130 B1

