	<h1 style="margin: 0;">DATA SHEET</h1>				TSTE	DS RNP 180004
					Rev.	A
	Product code	<h2 style="margin: 0;">PN / PO / PS series</h2>	Dwg rev.	<h2 style="margin: 0;">A</h2>	Date	24/09/2018
					Page	1 di 1



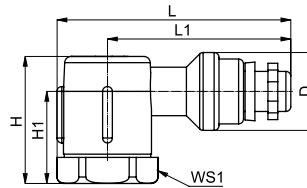
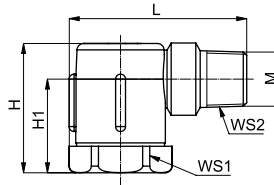
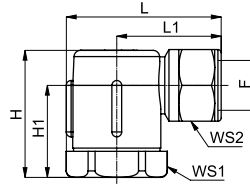
PN "FEMALE"



PO "MALE"



PS "QUICK FIT"

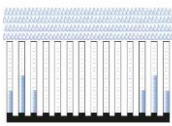


PN / PO / PS series hollow cone nozzles made by plastic moulding, are tangential nozzles, produce a hollow cone spray of atomized droplets with high chemical resistance and at low price. As they have a large free passage and no swirling vane inside their body, they minimize clogging.

PN - PO - PS series, provide wide spray angles from 60 to 130 degrees.

In order to certify the quality of our products and to guarantee customers a greater range of performances and fields of application PNR has decided to improve its PN-PO-PS series with a range of materials that now allows to reach new working conditions: Strict tests performed by our technicians in our laboratory have certified the achievement of our objectives.

Spray Pattern



Concave Distribution

Spray Section



Hollow cone

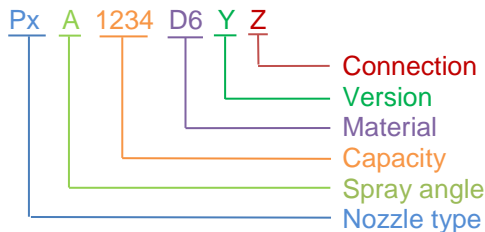
Typical applications

- Exhaust scrubbers,
- Pre-treatment in coating process,
- Dust and foam control,
- Filter spraying

Max. working temperature : 100 °C

Max. working pressure : 10 bar

CODING PATTERN FOR PN / PO / PS SERIES



Nozzle Type : PN = FEMALE; PO = MALE; PS = Quick-fit;

Spray Angle : Q = 60°; S = 70°; T = 80°; U = 90°; Y = 130°;

Capacity: see next table;

Materials : Body: PP + 30% fiberglass; Gasket: Fasisit- Oil;

Version : S = standard ;

Connection : B = BSPT; G = BSP; N = NPT; Q = Quick - fit;

Connection type		F	M	Capacity code	Capacity (l/min) 3bar	L	L1	H	H1	WS 1	WS 2	D	
PN	BSP NPT	female	3/8"	/	1170	1,7	47,5	32	39	28	28	22	/
					1390	3,9							
					1460	4,6							
					1570	5,7							
					1670	6,7							
					1850	8,5							
					1980	9,8							
2115	11,5												
PO	BSPT NPT	male	/	3/8"	2128	12,8	53,5	38	39	28	28	/	/
					2208	20,8							
					2220	22,0							
PS	Quick-fit	/	/	/	2220	22,0	71,5	56	39	28	28	/	24
PN	BSP	female	1/2"	/	2129	12,9	51,5	36	39	28	28	24	/
					2209	20,9							
					2221	22,1							
					2320	32,0							
					2420	42,0							