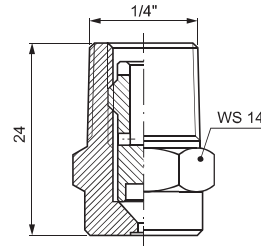
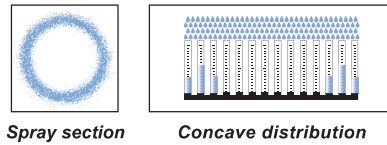


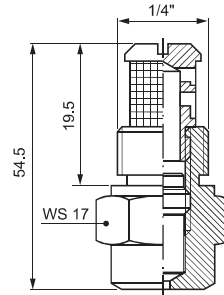
**HYDRAULIC ATOMIZERS**

RX/RZ series hydraulic nozzles deliver a very finely atomized hollow cone spray, even at low pressure values. They contain a precisely machined insert with narrow passages that can be easily disassembled for cleaning in case of obstruction. Clogging can be avoided placing a fine mesh strainer on the main manifold or using an individual filter.

- **Thread specification:** BSPT, NPT
- **Typical applications**  
dust control, humidification, deodorant spray, disinfectant liquid spray, exhaust scrubbers



**RX**



**RZ (+VEF)**



**VEF THREADED FILTERS**

We suggest to use a VEF threaded filter to protect the nozzle against clogging.

**ADDITIONAL SPRAY ANGLES**

The spray angle of the RZQ nozzles is 60° with orifice dimensions larger than 1.0 mm. Please see additional angles in the table below.

RZF	RZM	RZQ	RZU
30°	45°	60°	90°

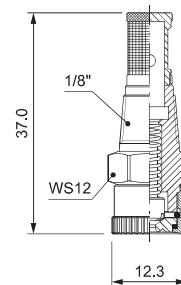
Code	D mm	Capacity (l/hour) at different pressure values (bar)										
		1.5	2.0	3.0	4.0	5.0	6.0	10	15	20	50	
80°	RXT 0060 xx	0.50	2.55	2.94	3.60	4.16	4.65	5.09	6.57	8.05	9.30	14.7
	RXT 0100 xx	0.50	4.24	4.90	6.00	6.93	7.75	8.49	11.0	13.4	15.5	24.5
	RXT 0130 xx	0.70	5.52	6.37	7.80	9.01	10.1	11.0	14.2	17.4	20.1	31.8
	RXT 0190 xx	0.70	8.06	9.31	11.4	13.2	14.7	16.1	20.8	25.5	29.4	46.5
	RXT 0250 xx	1.00	10.6	12.2	15.0	17.3	19.4	21.2	27.4	33.5	38.7	61.2
	RXT 0380 xx	1.00	16.1	18.6	22.8	26.3	29.4	32.2	41.6	51.0	58.9	93.1
	RXT 0510 xx	1.50	21.6	25.0	30.6	35.3	39.5	43.3	55.9	68.4	79.0	125
	RXT 0650 xx	1.60	27.6	31.8	39.0	45.0	50.3	55.2	71.2	87.2	101	159
	RXT 0780 xx	1.90	33.1	38.2	46.8	54.0	60.4	66.2	85.4	105	121	191
	RXT 0910 xx	1.90	38.6	44.6	54.6	63.0	70.5	77.2	99.7	122	141	223
	RXT 1116 xx	1.90	49.2	56.8	69.6	80.4	89.9	98.4	127	156	180	284
	RXT 1143 xx	1.90	60.7	70.1	85.8	99.1	111	121	157	192	222	350
	RXT 1166 xx	2.20	70.4	81.3	99.6	115	129	141	182	223	257	407

Code	D mm	Capacity (l/min) at different pressure values (bar)										
		1.5	2.0	3.0	4.0	5.0	6.0	10	15	20	50	
60°	RZQ 0080 xx	0.45	0.06	0.07	0.08	0.09	0.10	0.11	0.15	0.18	0.21	0.33
	RZQ 0120 xx	0.55	0.08	0.10	0.12	0.14	0.15	0.17	0.22	0.27	0.31	0.49
	RZQ 0250 xx	0.80	0.18	0.20	0.25	0.29	0.32	0.35	0.46	0.56	0.65	1.02
	RZQ 0390 xx	1.00	0.28	0.32	0.39	0.45	0.50	0.55	0.71	0.87	1.01	1.59
	RZQ 0560 xx	1.20	0.40	0.46	0.56	0.65	0.72	0.79	1.02	1.25	1.45	2.29
	RZQ 0780 xx	1.40	0.55	0.64	0.78	0.90	1.01	1.10	1.42	1.74	2.01	3.18
	RZQ 1100 xx	1.60	0.71	0.82	1.00	1.15	1.29	1.41	1.83	2.24	2.58	4.08
	RZQ 1140 xx	1.90	0.99	1.14	1.40	1.62	1.81	1.98	2.56	3.13	3.61	5.72
	RZQ 1170 xx	2.10	1.20	1.39	1.70	1.96	2.19	2.40	3.10	3.80	4.39	6.94
	RZQ 1200 xx	2.30	1.41	1.63	2.00	2.31	2.58	2.83	3.65	4.47	5.16	8.16

**SISTER PRODUCTS**

RXY 0620 C7 nozzles produce a very finely atomized spray with a wide angle. Their special tip in hard ceramic and internal swirl vane ensure a long service life and high resistance to wear. The nozzle body and filter are in Stainless Steel 316L. These nozzles are particularly suitable for chemical working environments and use a 120 Mesh filter to avoid clogging. Their special design ensure easy cleaning and simple servicing.

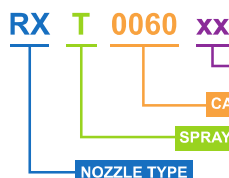
Code	D mm	Capacity at different pressure values (l/min) (bar)					
		1.5	2.0	2.5	3.0	4.0	5.0
145° RXY 0620 C7	1.96	0.44	0.51	0.57	0.62	0.72	0.80



**RXY 0620 C7**

**HOW TO MAKE UP THE NOZZLE CODE**

EX.: RXT 0060 B1



- **B1** - AISI 303 Stainless steel (RX)
- **B31** - AISI 316L Stainless steel (RZ)
- **C7** - AISI 316 Stainless steel+Ceramic
- **T1** - Brass (RX)
- **T** - 80°
- **Q** - 60°