

Ready for the next round?

DLM ALM Series

ISO 6432 ROUND MAGNETIC CYLINDERS
CILINDRI TONDI ISO 6432 MAGNETICI

Polyurethane lip-seals
Guarnizioni a labbro in poliuretano

Sizes from $\varnothing 8$ to $\varnothing 25$
Alesaggi da $\varnothing 8$ a $\varnothing 25$

Available with hexagonal non-rotation piston-rod
Disponibili con stelo esagonale anti-rotazione



DESCRIPTION / DESCRIZIONE

The new **Vesta DLM and ALM** pneumatic cylinders, compliant with ISO 6432, have been developed with stainless steel tube and aluminum heads assembled by a solid joining-system (edgebanding) to ensure a perfect linearity of the actuation movement; magnetic pistons and PU lip-seals for the whole serie. DLM Series is available with bores from Ø8 to Ø25; the ALM version with adjustable pneumatic cushioning has diameters from Ø16 to Ø25.

I nuovi cilindri pneumatici Vesta DLM e ALM a norma ISO 6432, sono stati progettati con camicia in acciaio inox e testate in alluminio assemblati con un particolare sistema di giunzione (bordatura) che garantisce una perfetta linearità di movimento durante l'attuazione. Tutta la serie ha pistoni magnetici e guarnizione a labbro in poliuretano. Gli alesaggi DLM vanno da Ø8 a Ø25; la versione ALM con ammortizzatori pneumatici regolabili ha diametri da Ø16 a Ø25.

TECHNICAL FEATURES / CARATTERISTICHE TECNICHE

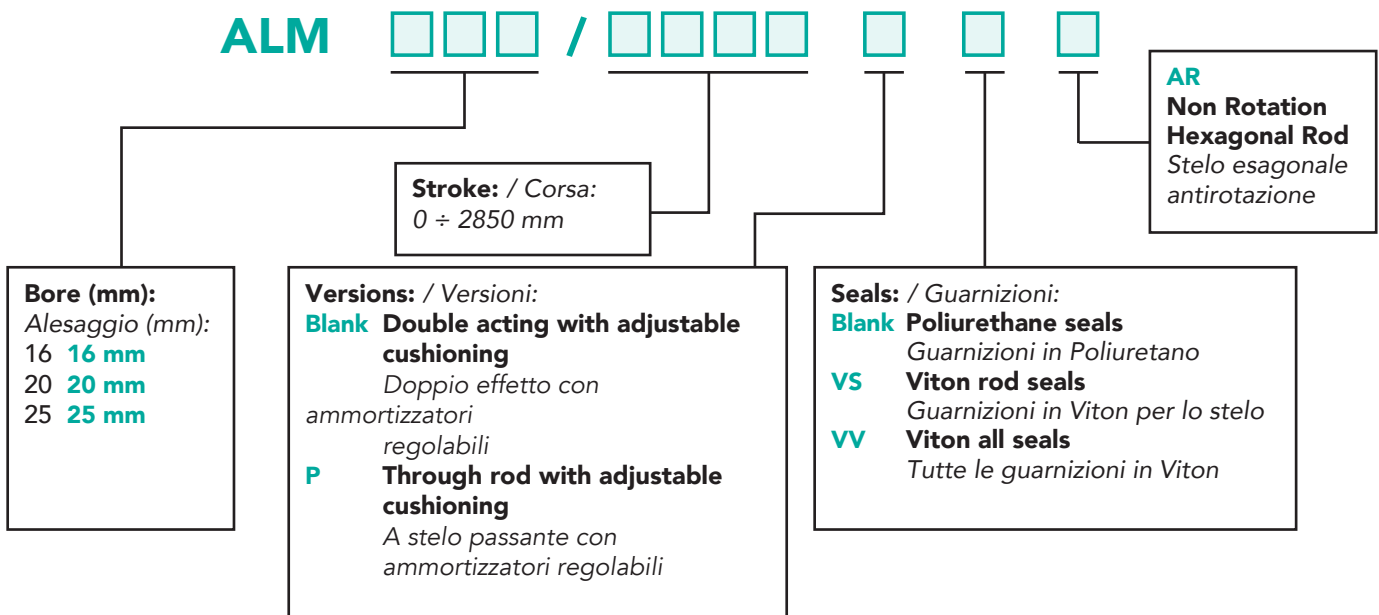
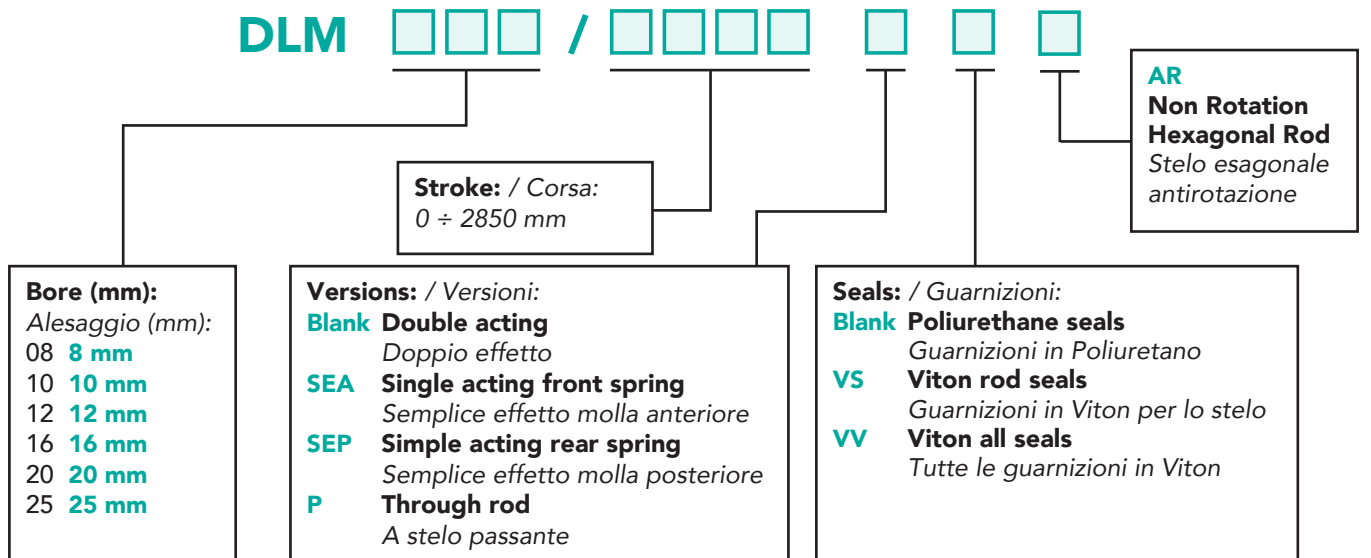
Heads / Testate	Aluminum alloy / Lega di alluminio
Piston rod / Stelo	Stainless steel AISI 304 / Acciaio inox AISI 304
Barrel / Camicia	Stainless steel AISI 304 / Acciaio inox AISI 304
Seals / Guarnizioni	Polyurethane / Poliuretano
Cushioning / Ammortizzatori	Pneum. adjusting cushions (only for ALM) Ammortizzatori pneum. regolabili (solo per ALM)
Buffers / Smorzatori d'urto	Mechanical / Meccanici
Environment temperature range Temperatura ambiente	-20 ÷ +80°C
Temperature range of medium Temperatura fluido	0° ÷ +40°C
Lubrication / Lubrificazione	Not required / Non necessaria
Medium / Fluido	Air / Aria
Max operating pressure Pressione max. di esercizio	10 bar

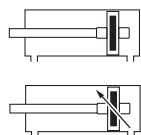
DESCRIPTION / DESCRIZIONE

Vesta Series **DLM/ALM** and **XDLM/XALM** can be ordered in **AR version, with non-rotation hexagonal rod**. The AR version is available for bores Ø16 to Ø25.

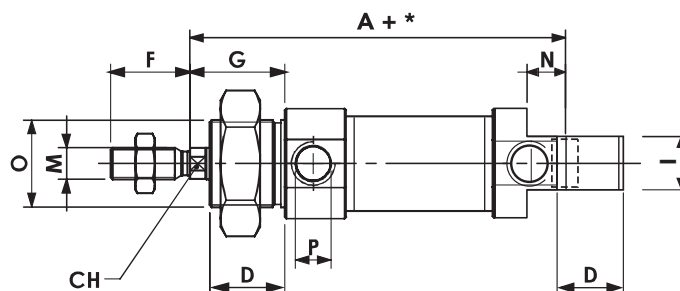
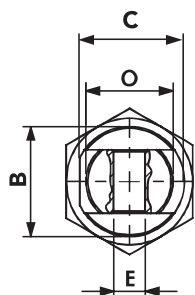
I cilindri delle serie DLM/ALM e XDLM/XALM possono essere ordinati in versione AR, con stelo esagonale anti-rotazione. La versione AR è disponibile per tutte le versioni negli alesaggi da Ø16 a Ø25.



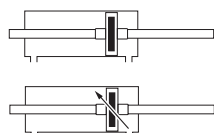


DLM .. /...**SINGLE ROD**
CILINDRO BASE STELO SEMPLICE

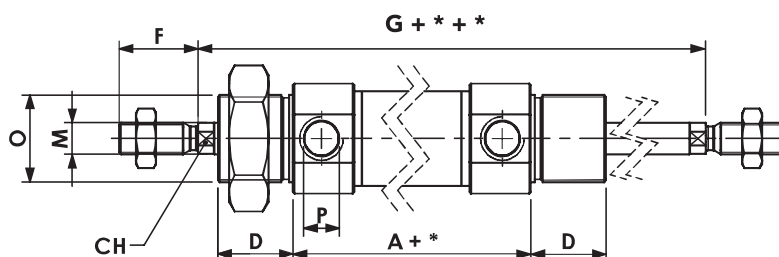
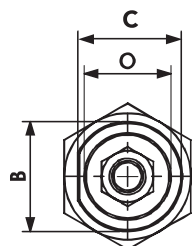
* = Stroke / Corsa



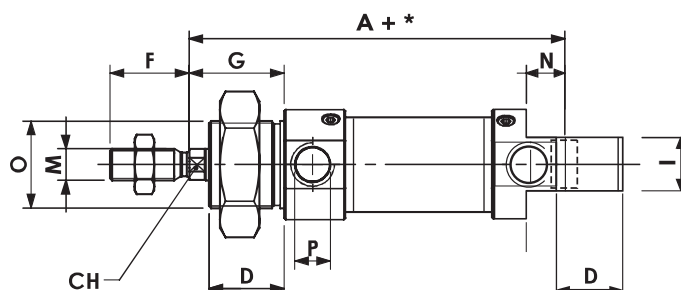
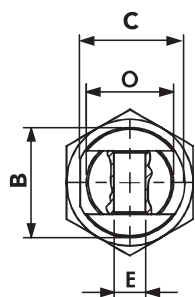
Bore Alesaggio	A	ØB	C	CH	D	ØE ^{H9}	F	G	I	ØM	N	ØO	ØP	Code Codice
08	64	16	15	/	12	4	12	16	8	M4x0,7	6	M12x1,25	M5	DLM 08/...
10	64	16	15	/	12	4	12	16	8	M4x0,7	6	M12x1,25	M5	DLM 10/...
12	75	19	18	5	18	6	16	22	12	M6x1,0	9	M16x1,5	M5	DLM 12/...
16	82	19	18	5	18	6	16	22	12	M6x1,0	9	M16x1,5	M5	DLM 16/...
20	95	27	25,5	7	20	8	20	24	16	M8X1,25	12	M22x1,5	G1/8	DLM 20/...
25	104	30	28,5	9	22	8	22	28	16	M10X1,25	12	M22x1,5	G1/8	DLM 25/...

DLM .. /... P**THROUGH ROD**
STELO PASSANTE

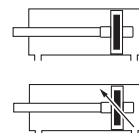
* = Stroke / Corsa



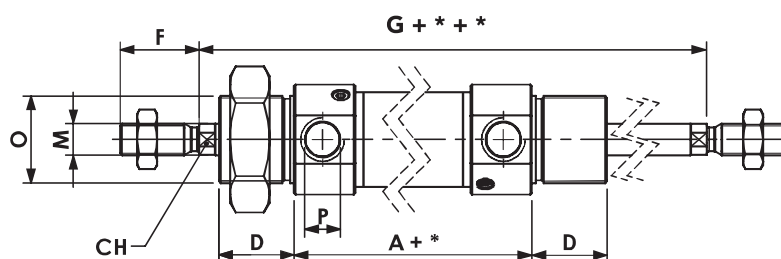
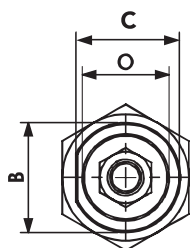
Bore Alesaggio	A	ØB	C	CH	D	ØE ^{H9}	F	G	I	ØM	ØO	ØP	Code Codice
12	75	19	18	5	18	6	16	92	12	M6	M16x1,5	M5	DLM 12/...
16	82	19	18	5	18	6	16	97	12	M6	M16x1,5	M5	DLM 16/...
20	95	27	25,5	7	20	8	20	115	16	M8X1,25	M22x1,5	G1/8	DLM 20/...
25	104	30	28,5	9	22	8	22	124	16	M10X1,25	M22x1,5	G1/8	DLM 25/...

ALM .. /...
SINGLE ROD
 CILINDRO BASE STELO SEMPLICE


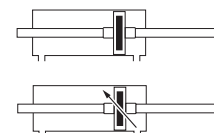
* = Stroke / Corsa



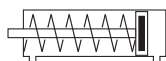
Bore Alesaggio	A	ØB	C	CH	D	ØE ^{H9}	F	G	I	ØM	N	ØO	ØP	Code Codice
08	64	16	15	/	12	4	12	16	8	M4x0,7	6	M12x1,25	M5	DLM 08/...
10	64	16	15	/	12	4	12	16	8	M4x0,7	6	M12x1,25	M5	DLM 10/...
12	75	19	18	5	18	6	16	22	12	M6x1,0	9	M16x1,5	M5	DLM 12/...
16	82	19	18	5	18	6	16	22	12	M6x1,0	9	M16x1,5	M5	DLM 16/...
20	95	27	25,5	7	20	8	20	24	16	M8X1,25	12	M22x1,5	G1/8	DLM 20/...
25	104	30	28,5	9	22	8	22	28	16	M10X1,25	12	M22x1,5	G1/8	DLM 25/...

ALM .. /... P
THROUGH ROD
 STELO PASSANTE


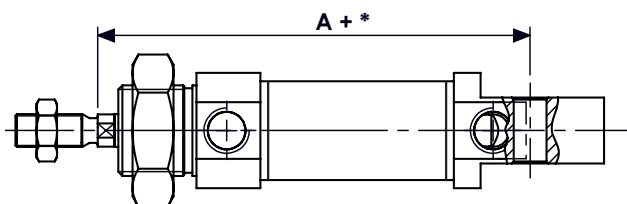
* = Stroke / Corsa



Bore Alesaggio	A	ØB	C	CH	D	ØE ^{H9}	F	G	I	ØM	ØO	ØP	Code Codice
12	75	19	18	5	18	6	16	92	12	M6	M16x1,5	M5	DLM 12/...
16	82	19	18	5	18	6	16	97	12	M6	M16x1,5	M5	DLM 16/...
20	95	27	25,5	7	20	8	20	115	16	M8X1,25	M22x1,5	G1/8	DLM 20/...
25	104	30	28,5	9	22	8	22	124	16	M10X1,25	M22x1,5	G1/8	DLM 25/...

DLM .. /... SEA
SIMPLE ACTING FRONT SPRING
 SEMPLICE EFFETTO MOLLA ANTERIORE


* = Stroke / Corsa

 For overall dimensions see DVM single rod
 Dimensioni di ingombro vedi DVM base stelo semplice


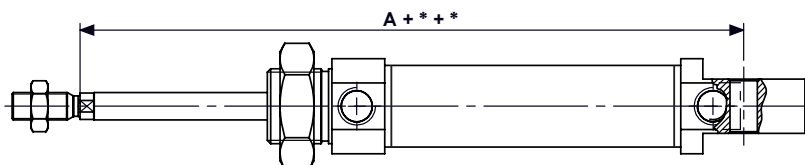
Bore Alesaggio	A	Code Codice
12	75	DLM 12/... SEA
16	82	DLM 16/... SEA
20	95	DLM 20/... SEA
25	104	DLM 25/... SEA

Spring force - Forza molla (daN)

Stroke Corse	Ø12 mm		Ø16 mm		Ø20 mm		Ø25 mm		...SEA
	Min.	Min.	Min.	Max.	Min.	Max.	Min.	Max.	
10	2,5	3,0	2,5	3,0	2,5	3,2	2,5	3,2	•
25	2,0	3,0	2,0	3,0	2,0	3,2	2,0	3,2	•
50	0,5	3,0	0,7	3,0	1,5	3,2	1,5	3,2	•

DLM .. /... SEP
SIMPLE ACTING REAR SPRING
 SEMPLICE EFFETTO MOLLA POSTERIORE


* = Stroke / Corsa

 For overall dimensions see DVM single rod
 Dimensioni di ingombro vedi DVM base stelo semplice


Bore Alesaggio	A	Code Codice
16	111	DLM 16/... SEP
20	127	DLM 20/... SEP
25	136	DLM 25/... SEP

Spring force - Forza molla (daN)

Stroke Corse	Ø12 mm		Ø16 mm		Ø20 mm		Ø25 mm		...SEP
	Min.	Min.	Min.	Max.	Min.	Max.	Min.	Max.	
10	2,5	3,5	2,5	3,5	2,5	3,5	2,5	3,5	•
25	2,0	3,5	2,0	3,5	2,0	3,5	2,0	3,5	•
50	1,0	3,5	1,0	3,5	1,5	3,5	1,5	3,5	•

∅	REAR HINGE HORIZONTAL MOUNTING MONTAGGIO A CONTROCERNIERA	FLANGE MOUNTING MONTAGGIO A FLANGIA	FOOT MOUNTING MONTAGGIO A PIEDINI	FLOATING JOINT TYPE "S" SNODO AUTOALLINEANTE	ROD EYE MOUNTING SNODO SFERICO	CLEVIS (ROD) MOUNTING FORCELLA STELO	CAP NUT DADO TESTATA	ROD NUT DADO STELO
8	AS/8	FL/8	P/8	Available on request <i>Su richiesta</i>	SNS/4x1	FS/4x0.7	DM8/12	DS8/10
10	AS/10	FL/10	P/10	Available on request <i>Su richiesta</i>	SNS/4x1	FS/4x0.7	DM8/12	DS8/10
12	AS/12	FL/12	P/12	SAS/6x1	SNS/6x1	FS/6x1	DM12/16	DM12/16
16	AS/16	FL/16	P/16	SAS/6x1	SNS/6x1	FS/6x1	DM12/16	DM12/16
20	AS/20	FL/20	P/20	SAS/8x1.25	SNS/8x1.25	FS/8x1.25	DM20/25	DS/20
25	AS/25	FL/25	P/25	SAS/10x1.25	SNS/10x1.25	FS/10x1.25	DM20/25	DS/25

MAGNETIC SWITCHES / FINECORSA MAGNETICI

FFS 0 1 VN

Bore	
Alesaggio (mm):	
∅8	8
∅10	10
∅12	12
∅16	16
∅20	20
∅25	25

For magnetic switches features see:
caratteristiche finecorsa magnetici vedi:

**VNCR2, VNPR2,
VNCE3, VNPE3**

MAGNETIC SWITCH POSITIONING / POSIZIONAMENTO DEI FINECORSA MAGNETICI

